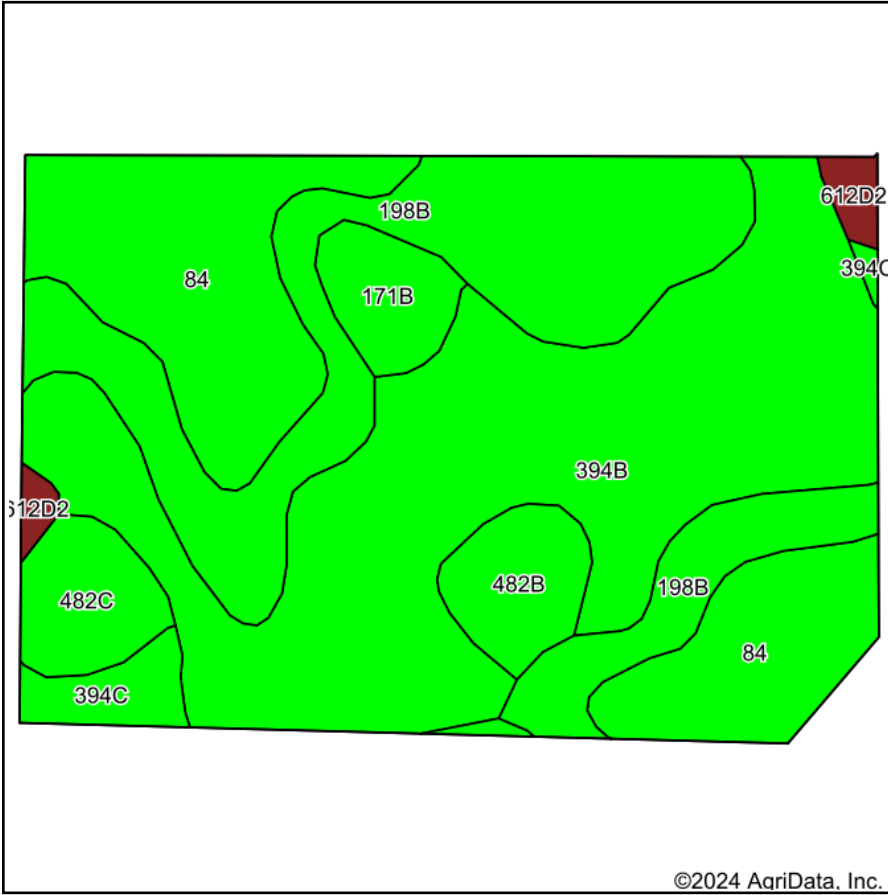
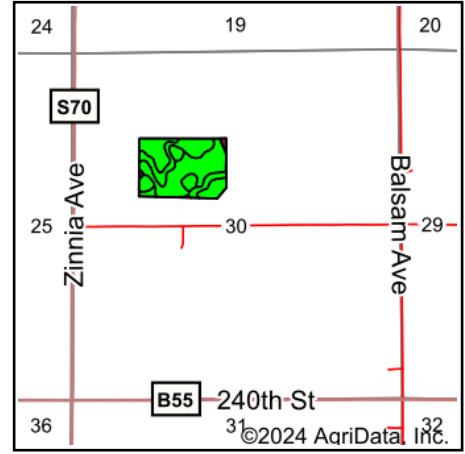


Soils Map



©2024 AgriData, Inc.

Soils data provided by USDA and NRCS.



State: **Iowa**
 County: **Floyd**
 Location: **30-95N-18W**
 Township: **Rockford**
 Acres: **26.9**
 Date: **10/23/2024**



Maps Provided By:



© AgriData, Inc. 2023

www.AgriDataInc.com



Area Symbol: IA067, Soil Area Version: 29

Code	Soil Description	Acres	Percent of field	CSR2 Legend	Non-Irr Class *c	CSR2**	CSR	Bromegrass alfalfa AUM	Bromegrass alfalfa hay Tons	Corn Bu	Kentucky bluegrass AUM	Oats Bu	Smooth bromegrass AUM	Soybeans Bu
394B	Ostrander loam, 2 to 5 percent slopes	10.65	39.6%		Ile	88	84							
198B	Floyd loam, 1 to 4 percent slopes	6.69	24.9%		Ilw	89	74							
84	Clyde silty clay loam, 0 to 3 percent slopes	5.65	21.0%		Ilw	88	77							
482C	Racine loam, 5 to 9 percent slopes	1.02	3.8%		IIIe	77	64							
482B	Racine loam, 2 to 5 percent slopes	1.00	3.7%		Ile	76	79							
171B	Bassett loam, 2 to 5 percent slopes	0.86	3.2%		Ile	85	79	10.7	6.4	215	3.9	92	6.4	62

Soils data provided by USDA and NRCS.



Code	Soil Description	Acres	Percent of field	CSR2 Legend	Non-Irr Class *c	CSR2**	CSR	Bromegrass alfalfa AUM	Bromegrass alfalfa hay Tons	Corn Bu	Kentucky bluegrass AUM	Oats Bu	Smooth bromegrass AUM	Soybeans Bu	
394C	Ostrander loam, 5 to 9 percent slopes	0.68	2.5%		IIIe	83	69								
612D2	Mottland loam, 9 to 14 percent slopes, moderately eroded	0.35	1.3%		IVe	28	38								
Weighted Average						2.09	86.4	78	0.3	0.2	6.9	0.1	2.9	0.2	2

**IA has updated the CSR values for each county to CSR2.

*c: Using Capabilities Class Dominant Condition Aggregation Method